

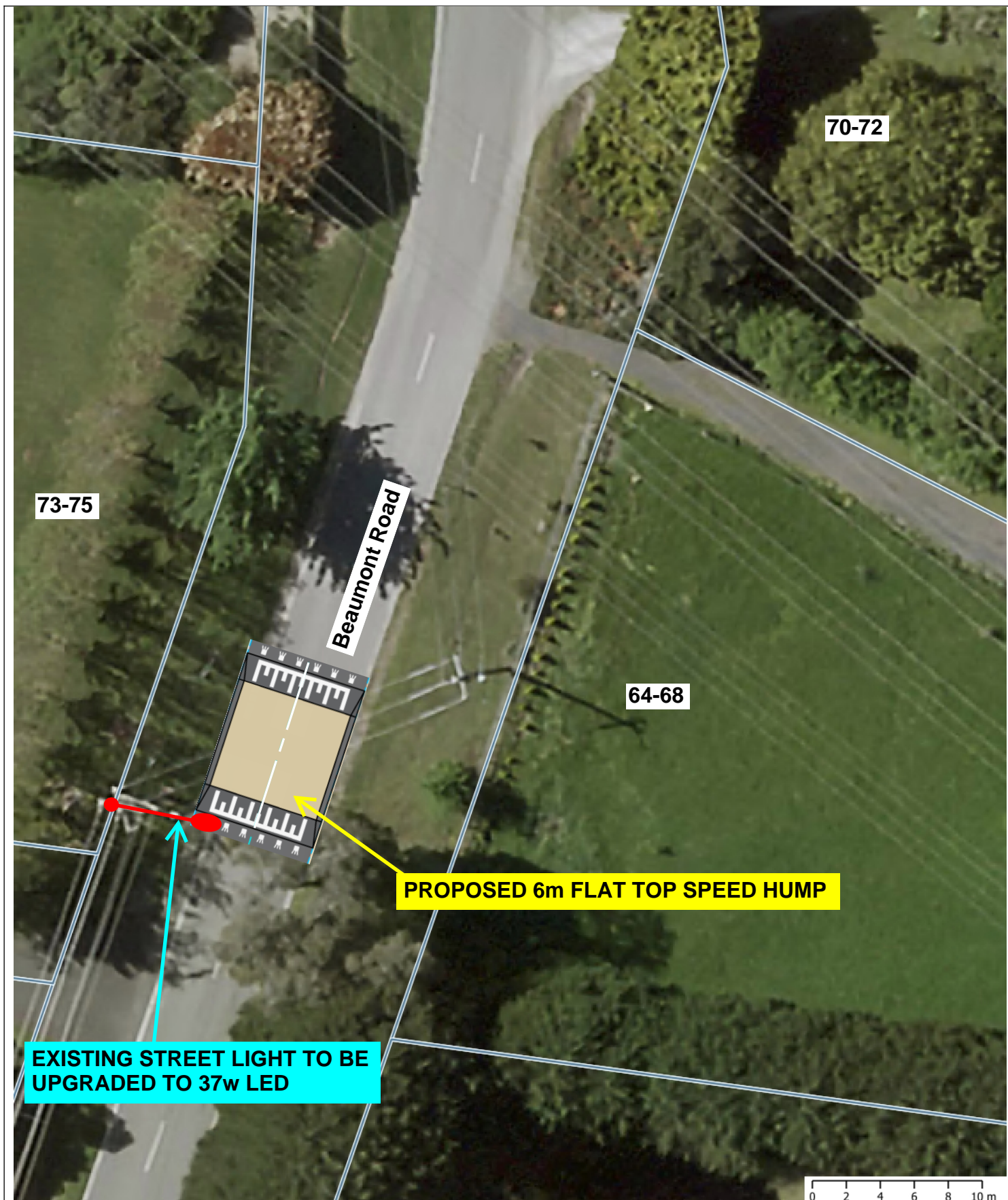
City of
Casey



Disclaimer

This map has been produced by the City of Casey. The map contains data supplied under licence from the State of Victoria. Whilst every effort has been made to ensure the information contained in the map is up-to-date and accurate neither the City of Casey nor the State of Victoria accepts responsibility if the map is not complete and/or contains inaccuracies. No person should rely on the information without first obtaining independent advice from a suitably qualified person. This map is not to be reproduced without prior consent from the City of Casey.

LOCATION 1 - LAYOUT PLAN



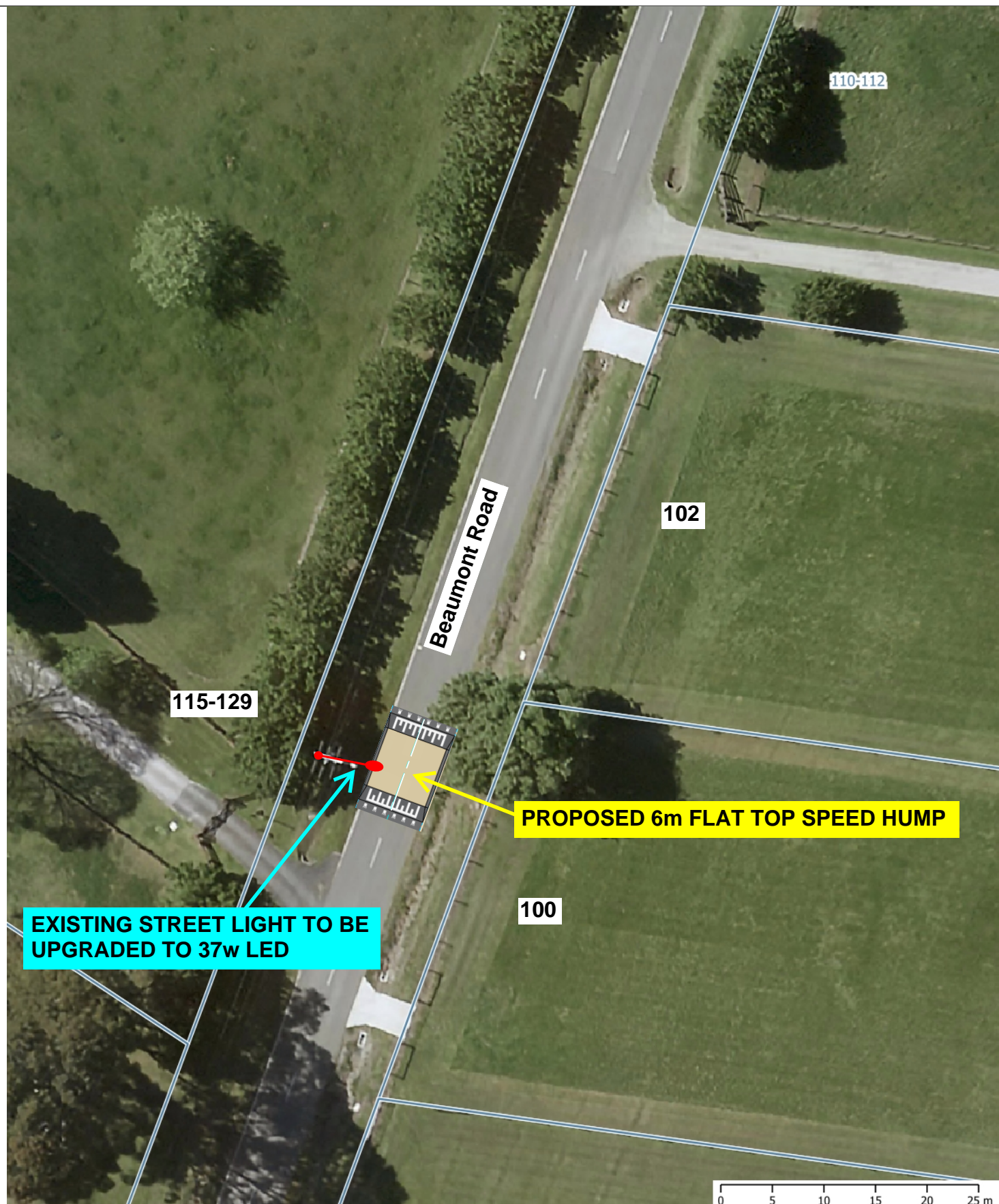
City of
Casey



Disclaimer

This map has been produced by the City of Casey. The map contains data supplied under licence from the State of Victoria. Whilst every effort has been made to ensure the information contained in the map is up-to-date and accurate neither the City of Casey nor the State of Victoria accepts responsibility if the map is not complete and/or contains inaccuracies. No person should rely on the information without first obtaining independent advice from a suitably qualified person. This map is not to be reproduced without prior consent from the City of Casey.

LOCATION 2 - LAYOUT PLAN



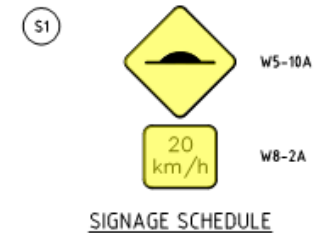
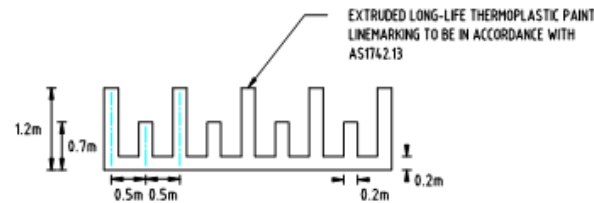
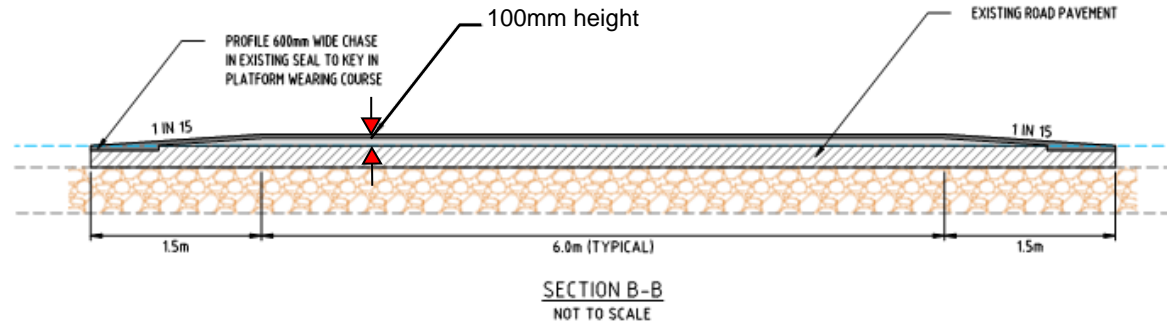
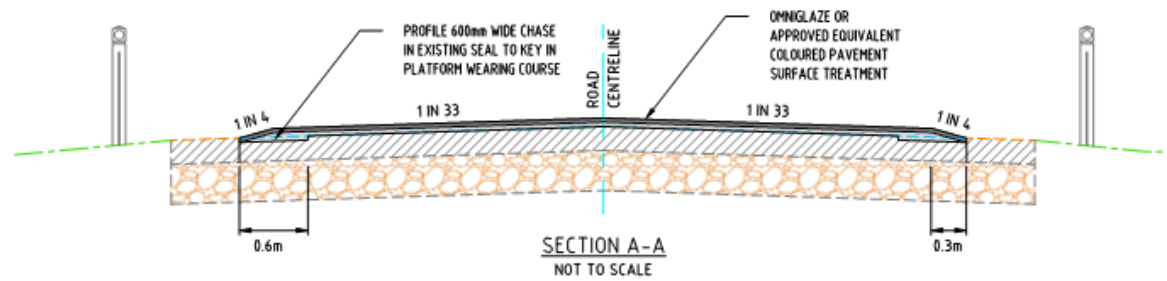
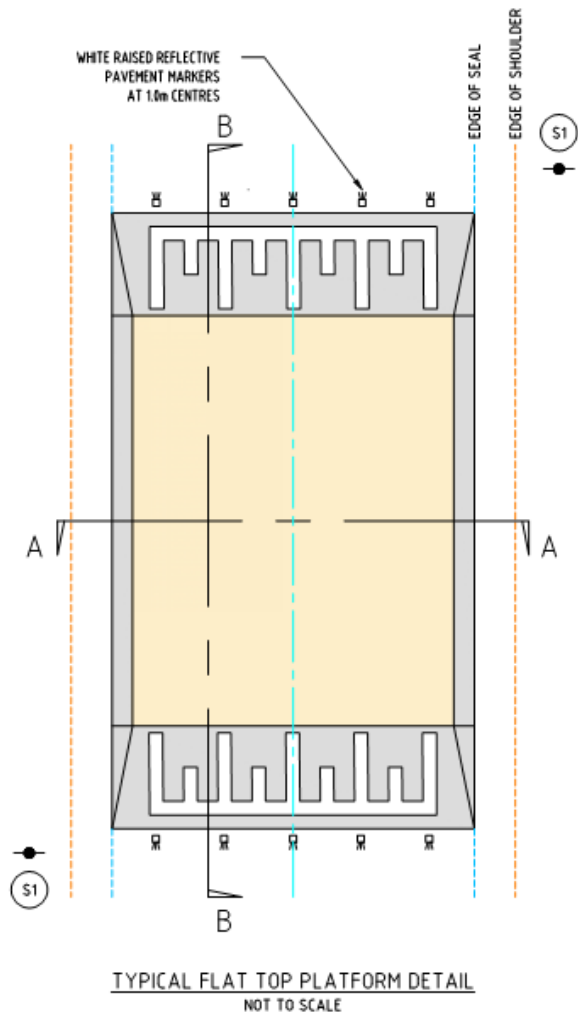
City of
Casey



Disclaimer

This map has been produced by the City of Casey. The map contains data supplied under licence from the State of Victoria. Whilst every effort has been made to ensure the information contained in the map is up-to-date and accurate neither the City of Casey nor the State of Victoria accepts responsibility if the map is not complete and/or contains inaccuracies.
No person should rely on the information without first obtaining independent advice from a suitably qualified person. This map is not to be reproduced without prior consent from the City of Casey.

LOCATION 3 - LAYOUT PLAN



PRELIMINARY



CIVIC CENTRE
P.O. Box 1000
Narre Warren 3805
Victoria
Tel: (03) 9705 5200
Fax: (03) 9704 9544
Email: caseycc@casey.vic.gov.au

Disclaimer

This map has been produced by the City of Casey. The map contains data supplied under licence from the State of Victoria. Whilst every effort has been made to ensure the information contained in the map is up-to-date and accurate neither the City of Casey nor the State of Victoria accepts responsibility if the map is not complete and/or contains inaccuracies.
No person should rely on the information without first obtaining independent advice from a suitably qualified person. This map is not to be reproduced without prior consent from the City of Casey.

**LOCAL TRAFFIC MANAGEMENT PROGRAM
TYPICAL FLAT-TOP HUMPS DETAIL**