



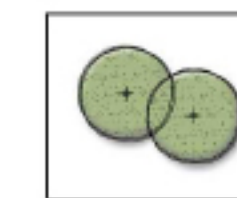
## KEY

1. Additional parking bays (total 36) along existing gravel vehicular roadway
2. Future opportunity for paving upgrade, additional terrace seating and shade elements to exist ing hard-stand paving to pavilion with x3 number bench seats
3. Enhance provision for pedestrian access within reserve area with proposed 3m wide insitu concrete pathways links connecting to existing pathways outside reserve
4. Opportunity to visually screen existing bin enclosure incorporating timber battens or similar
5. Proposed low under-storey planting (max. height 1.2m); existing trees to be pruned up with clean trunks
6. Future upgrade to cricket practice nets to Council/Cricket Victoria standard
7. WSUD stormwater retention capacity to planted areas
8. Opportunity to renew existing playground adjacent to pavilion
9. Proposed new Local-level playground at front of reserve
10. Proposed safety lighting to car park and pavilion area
11. Potential future sports lighting upgrade for competition
12. Proposed drinking fountain (indicative location only)
13. Proposed bin (indicative location only)

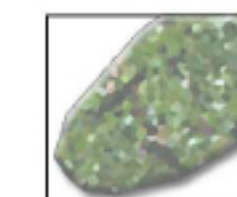
## LEGEND



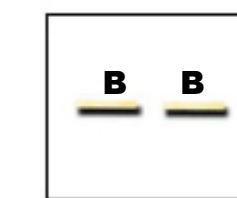
Existing trees retained (lower branches to be pruned up to allow clear sightlines)



Proposed tree planting selected with clean trunks to allow clear sightlines



Proposed low height planted garden bed (areas max. height 1.2m)



Proposed seating to support spectators and general park users



Open areas with existing lawn / turf



Reserve site boundary