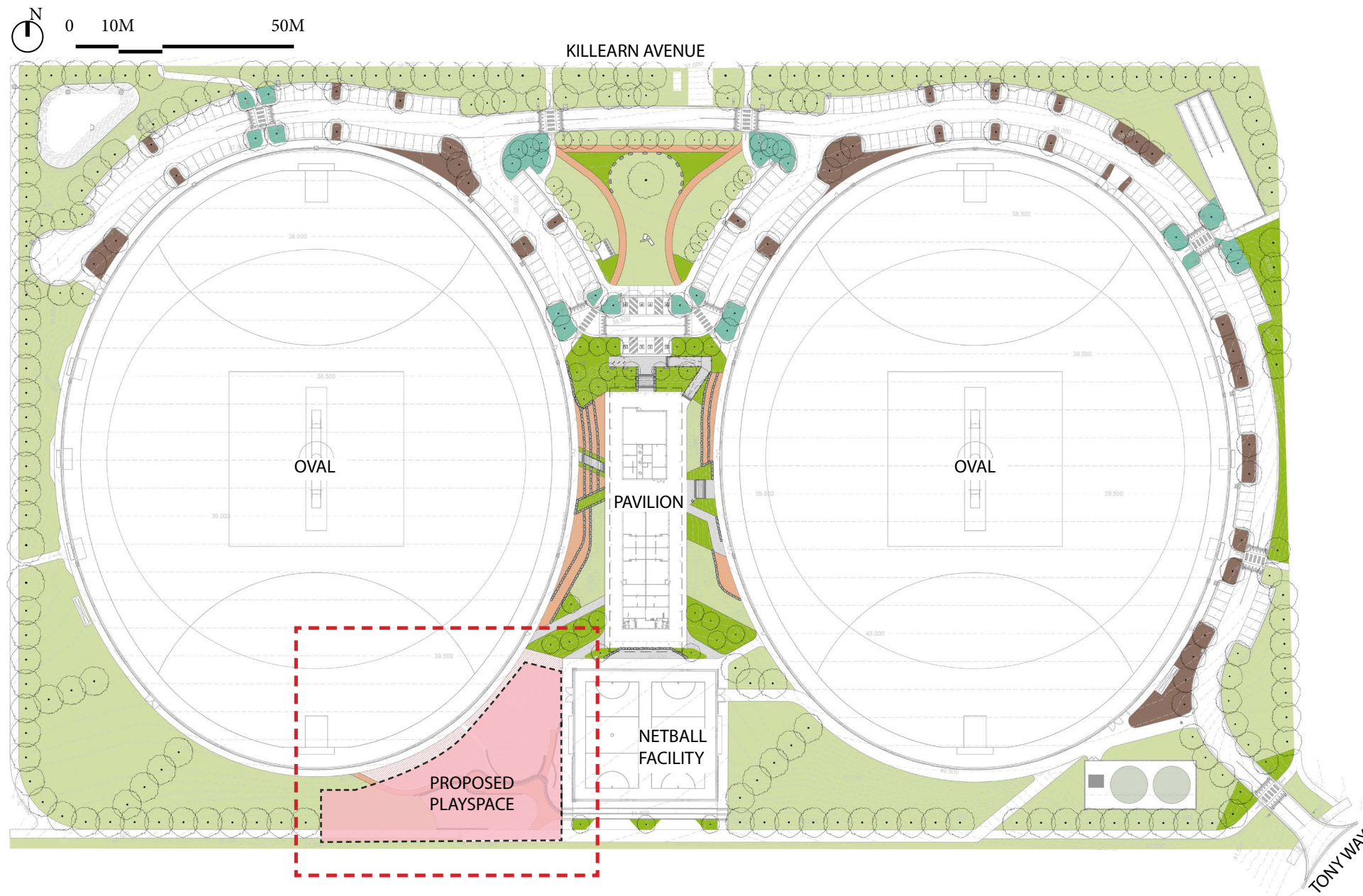


LOCHAVEN RECREATION RESERVE PLAYSPACE DEVELOPMENT

81 Killearn Avenue, Cranbourne West VIC 3977

LOCHAVEN RECREATION RESERVE OVERALL LANDSCAPE PLAN



LEGEND



DESIGN INTENTION

Playground at Lochaven Recreation Reserve

Have your say on the concept plans for a new playground to be built at Lochaven Recreation Reserve.

With construction on the new sporting ovals now underway, we are seeking community input on the new playground that will also be delivered at the reserve.

The design

Some of the equipment we are proposing to put in the new playground includes swings, a rocker, junior play structure with a double slide, net bridges, climbing walls and nature-play elements allowing for more unstructured play. There will also be basket swings and consideration given to how the space can be made accessible for people of all abilities.

The site will have stone seating walls that will function as a viewing area for the sports ovals, while reclaimed timber from the reserve will be used in the nature play elements and throughout the site.

The garden beds and trees incorporated into the space will not only provide valuable shade but will also support local biodiversity and fauna in the area.

The large mud stones are used to address the level difference on site and also function as seating to accommodate users of the space.

Why incorporate nature play?

Connecting with Nature is beneficial for all, as it allows us to learn, explore and imagine. Unstructured play is significant in the development of children's physical, emotional, social and creative skills.

Nature play spaces such as the proposed Lochaven Recreation Reserve provide children with the experience of both traditional play equipment and natural elements that allow them to learn, explore and use their imagination in unstructured play.

How to have your say:

A concept plan for the playground has been included on the following page to give you an idea of how it could look and some of the elements that could be incorporated into the space.

The easiest way to have your say on the concept plans is to provide your feedback directly on Casey Conversations at: conversations.casey.vic.gov.au/rec-reserve-playspaces

You can also provide your feedback to:

PlayspaceDesign@casey.vic.gov.au

or call on the below number and ask to speak to Landscape Design Team:

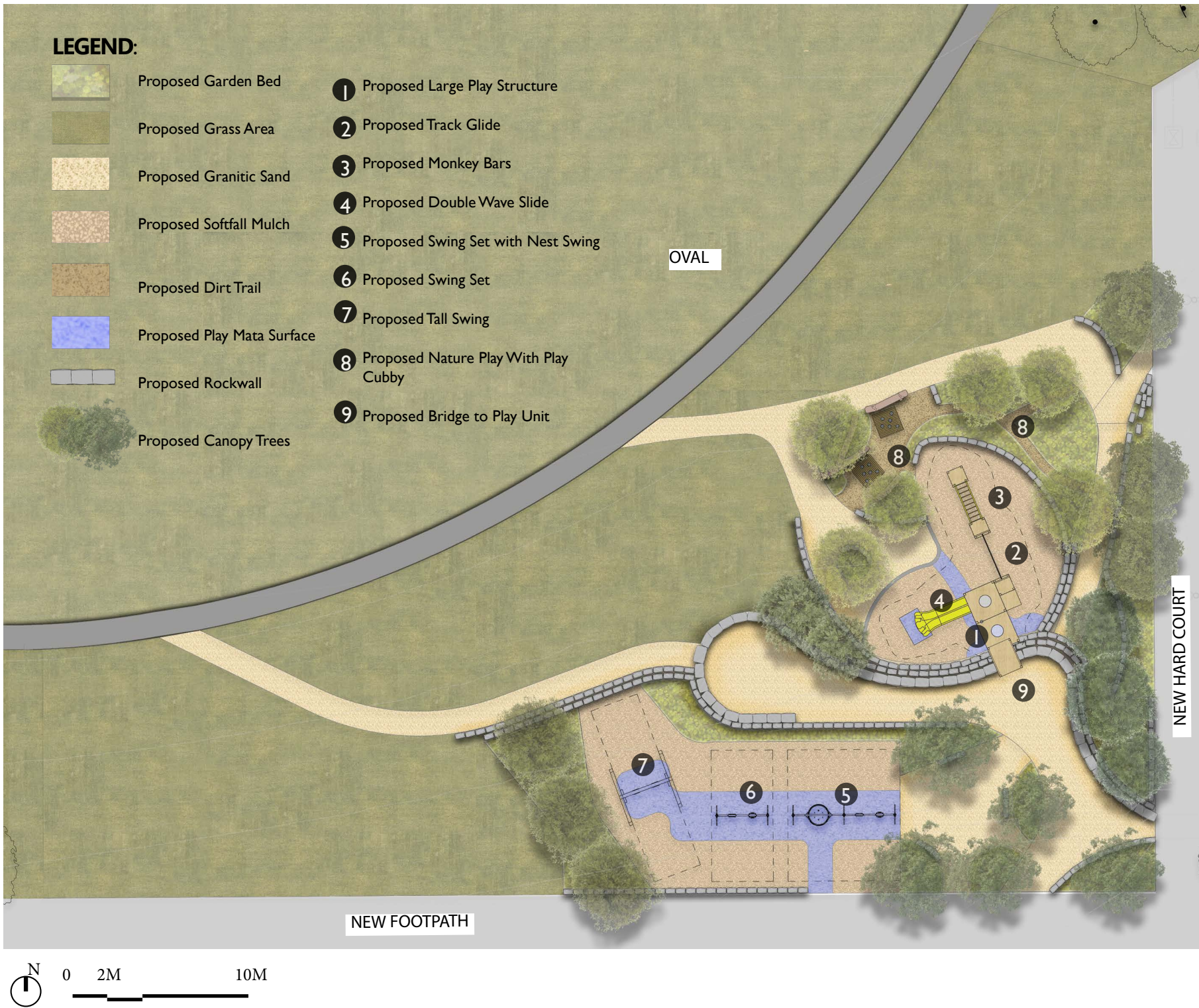
03 9705 5200

**Note: All feedback must be received by 17 October 2021.*

LOCHAVEN RECREATION RESERVE PLAYSPACE DEVELOPMENT

81 Killearn Avenue, Cranbourne West VIC 3977

PROPOSED PLAYSPACE CONCEPT PLAN



CONCEPTUAL VISION FOR THE PLAYSPACE

