

Bunjil Place Precinct Draft concept masterplan

DRAFT

The Bunjil Place Precinct draft concept masterplan will deliver a uniquely urban, vibrant, inclusive, safe, and productive precinct.

Existing

- 1 Bunjil Place
- 2 Casey Aquatic and Recreation Centre (ARC)
- 3 Max Pawsey Recreational Reserve
- 4 Fountain Gate Shopping Centre
- 5 Existing bus interchange

Proposed

- 6 Enhanced civic space and upgraded Patrick Northeast Drive
- 7 Enhanced pedestrian connection to Max Pawsey Reserve
- 8 'Bunjil Walk' pedestrian street
- 9 Allow for Patrick NE Drive to be closed for special events
- 10 New northern open space
- 11 New east-west connector road with pedestrian priority crossing
- 12 Enhanced Overland Drive, potentially incorporating on-street bus bays
- 13 Potential pedestrian bridge connection to existing Bus Interchange
- 14 Potential commercial/multi-deck car park
- 15 Potential hotel and conference centre/commercial development
- 16 Potential multi-rise residential apartments

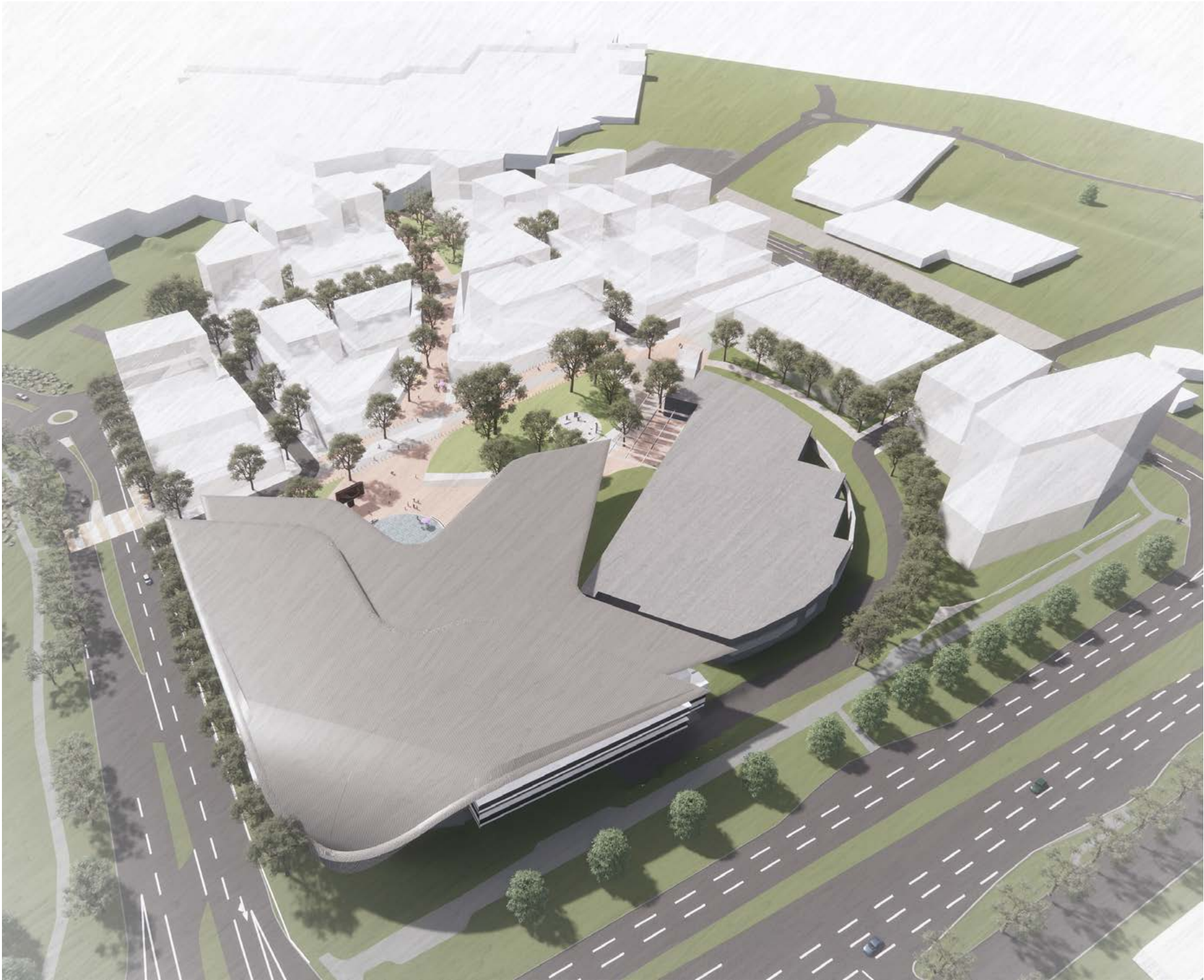


Draft concept master plan
Source: MGS Architects

- Key
- Study area
 - Existing building
 - Proposed building
 - Primary pedestrian path
 - Secondary pedestrian path
 - Public laneways
 - Semi-public laneways
 - Closable street
 - Above ground multi deck parking
 - Potential hotel location
 - Key destinations
 - Open space
 - Plaza and urban public open space

Bunjil Place Precinct Draft concept masterplan

DRAFT



Aerial view of the Bunjil Place Precinct concept masterplan looking north-east
Source: MGS Architects



View from Bunjil Place looking northeast towards the pedestrian link.
Source: MGS Architects



View from new arrival square looking south towards Bunjil Place along the pedestrian link.
Source: MGS Architects